

**DIMENSIONS (CM) WXD<sub>X</sub>H  
AND DESCRIPTION**

**EUROPEAN WALNUT**

180×55×30 – 2 drawers (left)	<a href="http://artisan.ba/en/materials#wood">http://artisan.ba/en/materials#wood</a>
180×55×30 – 1 drawer + 1 open compartment (right) – anex	<a href="http://artisan.ba/en/materials#wood">http://artisan.ba/en/materials#wood</a>
90×55×30 – 1 open compartment (right) – anex	<a href="http://artisan.ba/en/materials#wood">http://artisan.ba/en/materials#wood</a>
270×55×30 – 2 drawers + 1 open compartment in middle	<a href="http://artisan.ba/en/materials#wood">http://artisan.ba/en/materials#wood</a>

# LATUS MODULAR SYSTEM

## LOW BOARD MODULES

COLLECTION: Latus

DESIGNER: Salih Teskeredžić

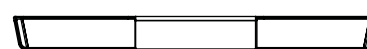
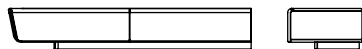
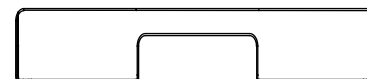
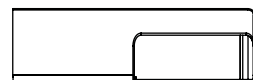
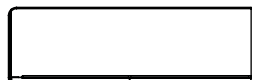
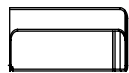
### CODE:

LBLA1XXYY (TWO DRAWERS)

LBLA2XXYY (1 DRAWER+ OPEN  
COMPARTMENT)

LBLA3XXYY (2 DRAWERS+ OPEN  
COMPARTMENT IN MIDDLE)

LBLA4XXYY (1 OPEN COMPARTMENT)



Commode and foreparts thickness: 2 cm

With cable management system

Dismantling option: No

Other modifications possible on request

One modular system must be consisted of one left  
and one right part

Packing: stretch wrap + five layer cardboard box

Packing: 1 piece/packing

FOR ANY FURTHER INFORMATION PLEASE CONTACT US AT [INFO@ARTISAN.BA](mailto:INFO@ARTISAN.BA)

**ARTISAN**® **LOVE  
WOOD**

**DIMENSIONS (CM) WXD<sub>X</sub>H  
AND DESCRIPTION**

**MATERIALS**

180×35×25 – 1 open  
+ 1 flip door (left)

<http://artisan.ba/en/materials#wood>

180×35×25 – 1 flip door  
+ 1 open compartment (right)

<http://artisan.ba/en/materials#wood>

90×35×25  
– open compartment (right)

<http://artisan.ba/en/materials#wood>

270×35×25 – 2 open  
compartments + 1 flip door in  
middle

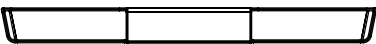
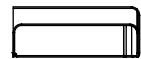
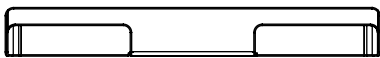
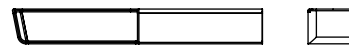
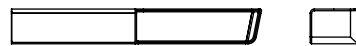
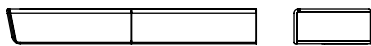
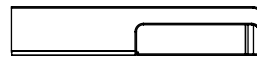
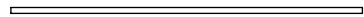
<http://artisan.ba/en/materials#wood>

180×35×25 – 2 drawers (left)

<http://artisan.ba/en/materials#wood>

225 x 20x 4 - shelf

<http://artisan.ba/en/materials#wood>



# LATUS MODULAR SYSTEM

## WALL MODULES

COLLECTION: Latus

DESIGNER: Salih Teskeredžić

### CODE:

LBLA5XXYY (TWO DRAWERS)

LBLA6XXYY (1 DRAWER+ OPEN  
COMPARTMEN)

LBLA7XXYY (1 DRAWER+ OPEN  
COMPARTMEN)

LBLA8XXYY (2 OPEN COMPARTMENS+  
CLOSED COMPARTMENT IN MIDDLE)

LBLA9XXYY (1 OPEN COMPARTMENT)

LASOXXYY

Commode and foreparts thickness: 2 cm

With cable management system

Dismantling option: No

Other modifications possible on request

One modular system must be consisted of one left  
and one right part

Packing: stretch wrap + five layer cardboard box

Packing: 1 piece/packing

FOR ANY FURTHER INFORMATION PLEASE CONTACT US AT [INFO@ARTISAN.BA](mailto:INFO@ARTISAN.BA)

**ARTISAN**® **LOVE  
WOOD**